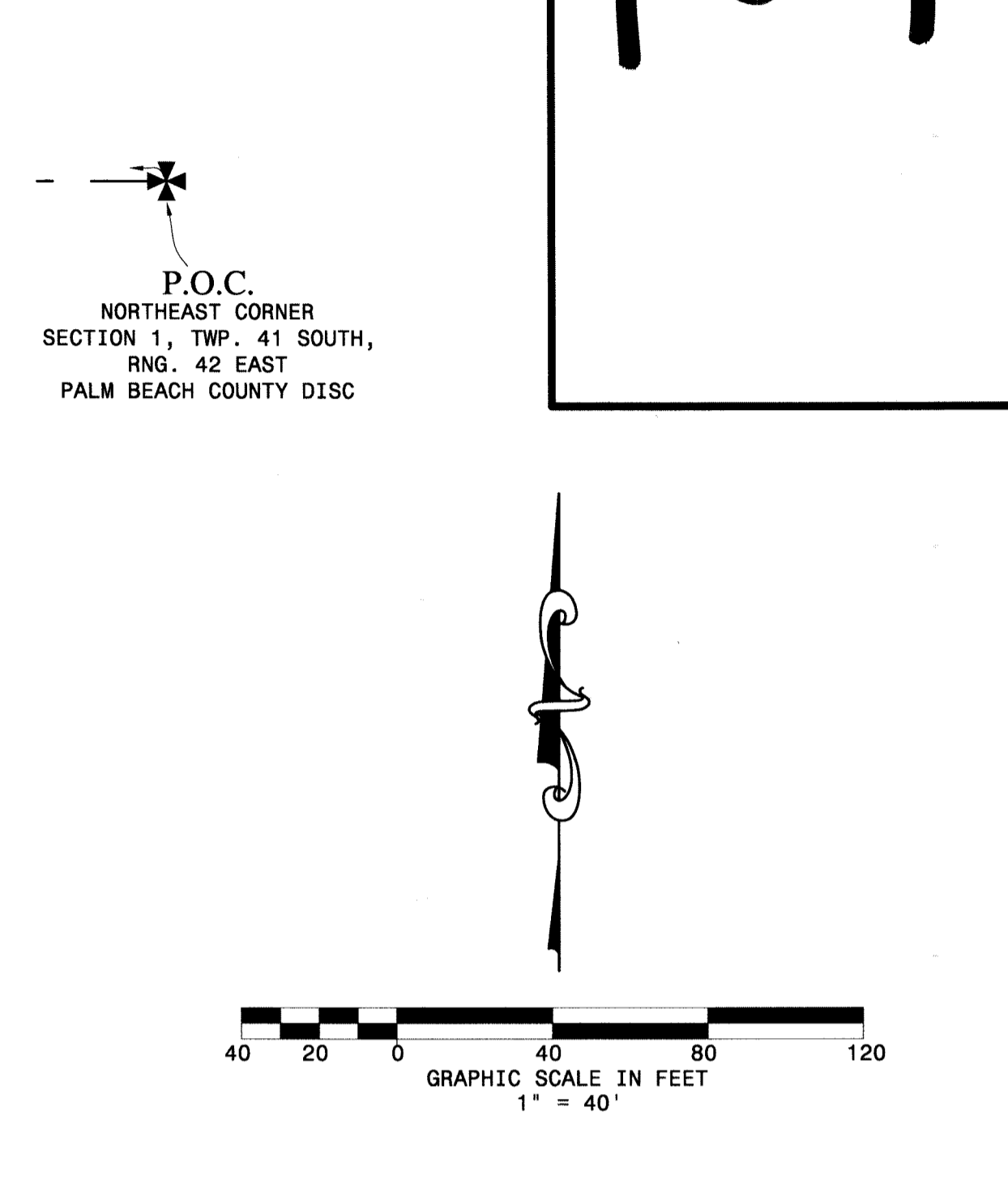
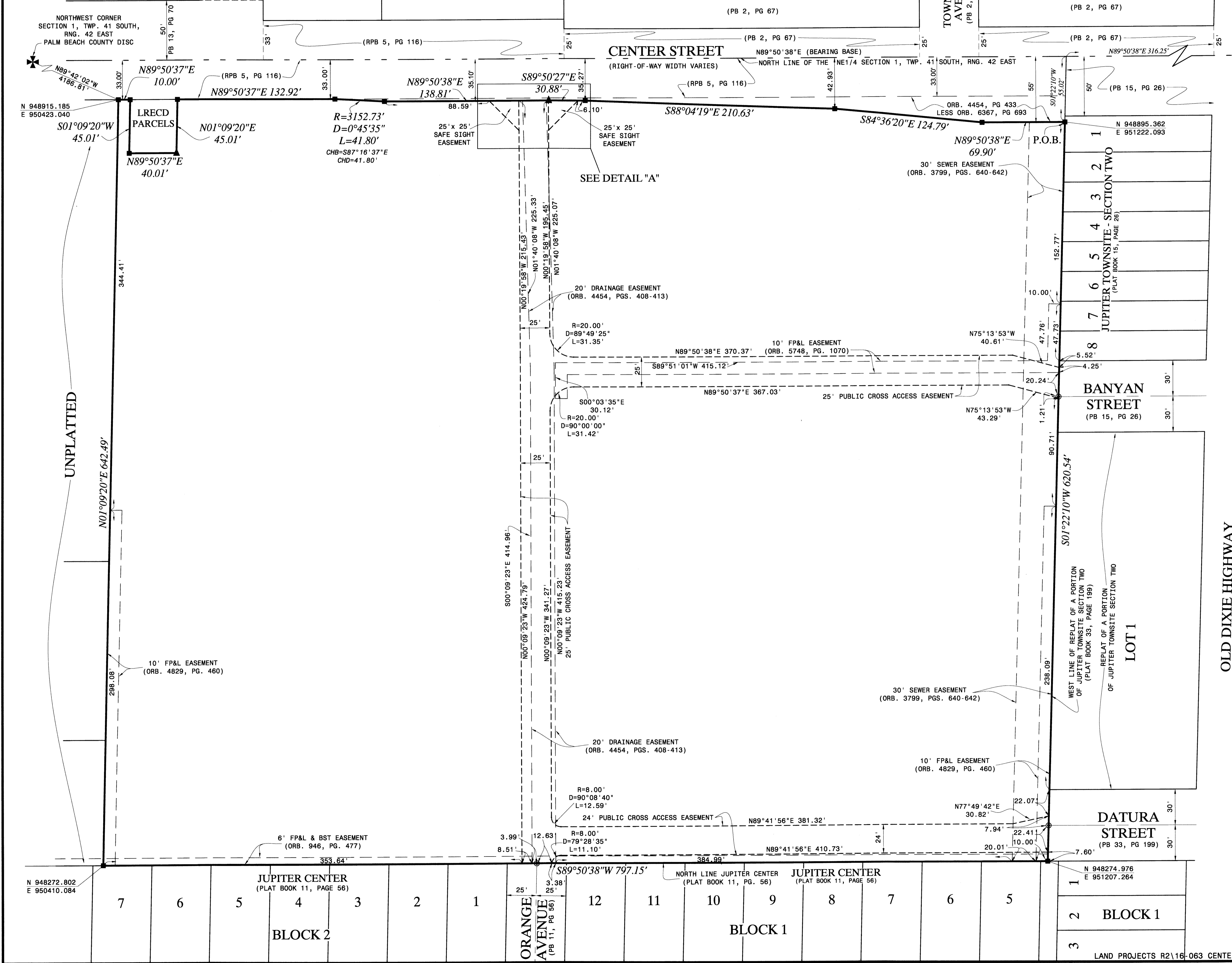


CENTER PARK COMMERCIAL CENTER

LYING IN THE NORTHEAST QUARTER OF SECTION 1, TOWNSHIP 41 SOUTH, RANGE 42 EAST,
TOWN OF JUPITER, PALM BEACH COUNTY, FLORIDA

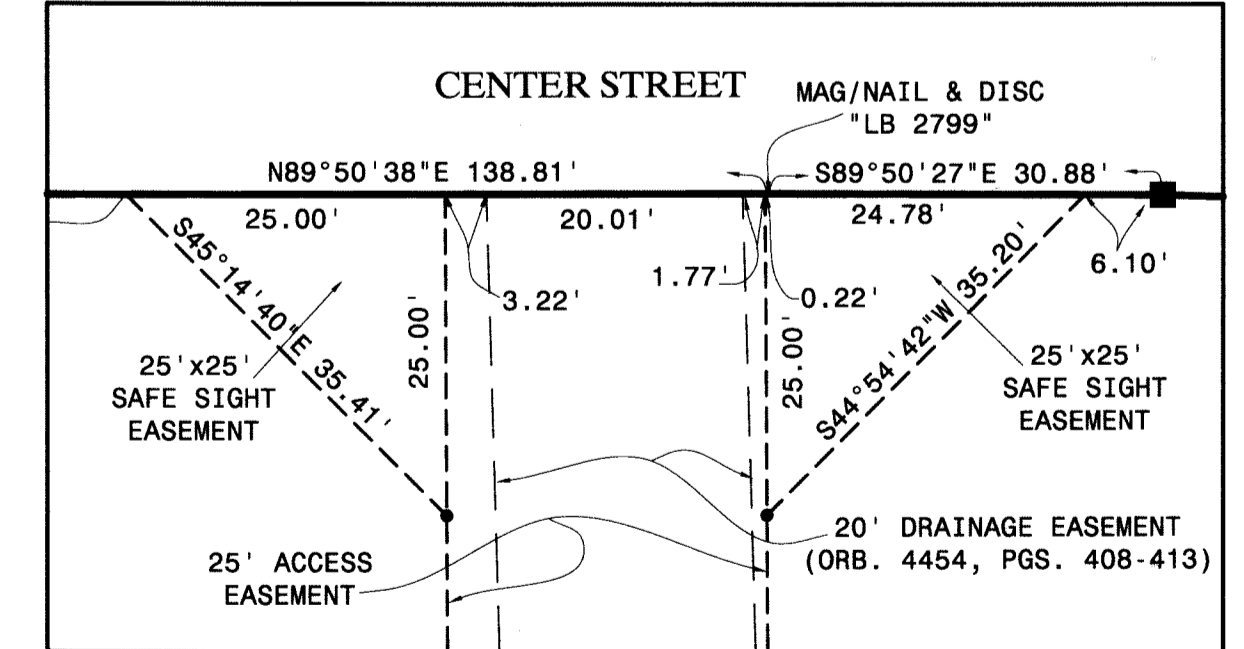
JANUARY 2018

109



- LEGEND**
- ▲ FOUND MAG/NAIL & DISC "LB 2799"
 - SET 4"x4" PERMANENT REFERENCE MONUMENT (P.R.M.) "PRM LB 8130"
 - SET PERMANENT REFERENCE POINT (P.C.P.) MAG/NAIL & DISC "P.C.P. LB 8130"
 - P.O.C. POINT OF COMMENCEMENT
 - P.O.B. POINT OF BEGINNING
 - R RADIUS
 - A ARC LENGTH
 - ORB. OFFICIAL RECORD BOOK
 - CHB CHORD BEARING
 - CHD CHORD DISTANCE
 - D DELTA ANGLE (INTERIOR ANGLE)
 - TWP. TOWNSHIP
 - RNG. RANGE
 - FP&L FLORIDA POWER & LIGHT
 - BST BELLSOUTH TELEPHONE
 - PB PLAT BOOK
 - RPB ROAD PLAT BOOK
 - PG PAGE
 - LRECD LOXAHATCHEE RIVER ENVIRONMENTAL CONTROL DISTRICT

DETAIL "A"
SCALE: 1" = 15'



SHEET 2 OF 2

Legacy
Surveying and Mapping, Inc.
112 N. U.S. Highway No. 1
Tequesta, FL 33469
Phone: (561) 746-8424
BUSINESS LICENSE: LB# 8130